



# INDIAN NATION TRADERS

HUB FOR INDUSTRIAL SAFETY AND HYGIENE PRODUCTS



Brands you **trust**  
for the work you do

Catalogue - 2022





## INDIAN NATION TRADERS

HUB FOR INDUSTRIAL SAFETY AND HYGIENE PRODUCTS

### We Deal in



## Kimberly-Clark Corporation



## Shigematsu Works Co., Ltd



DEEPAK FERTILISERS  
AND PETROCHEMICALS  
CORPORATION LIMITED

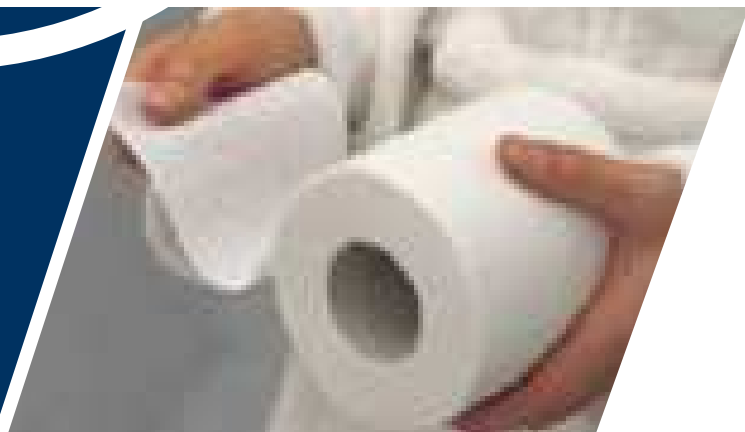
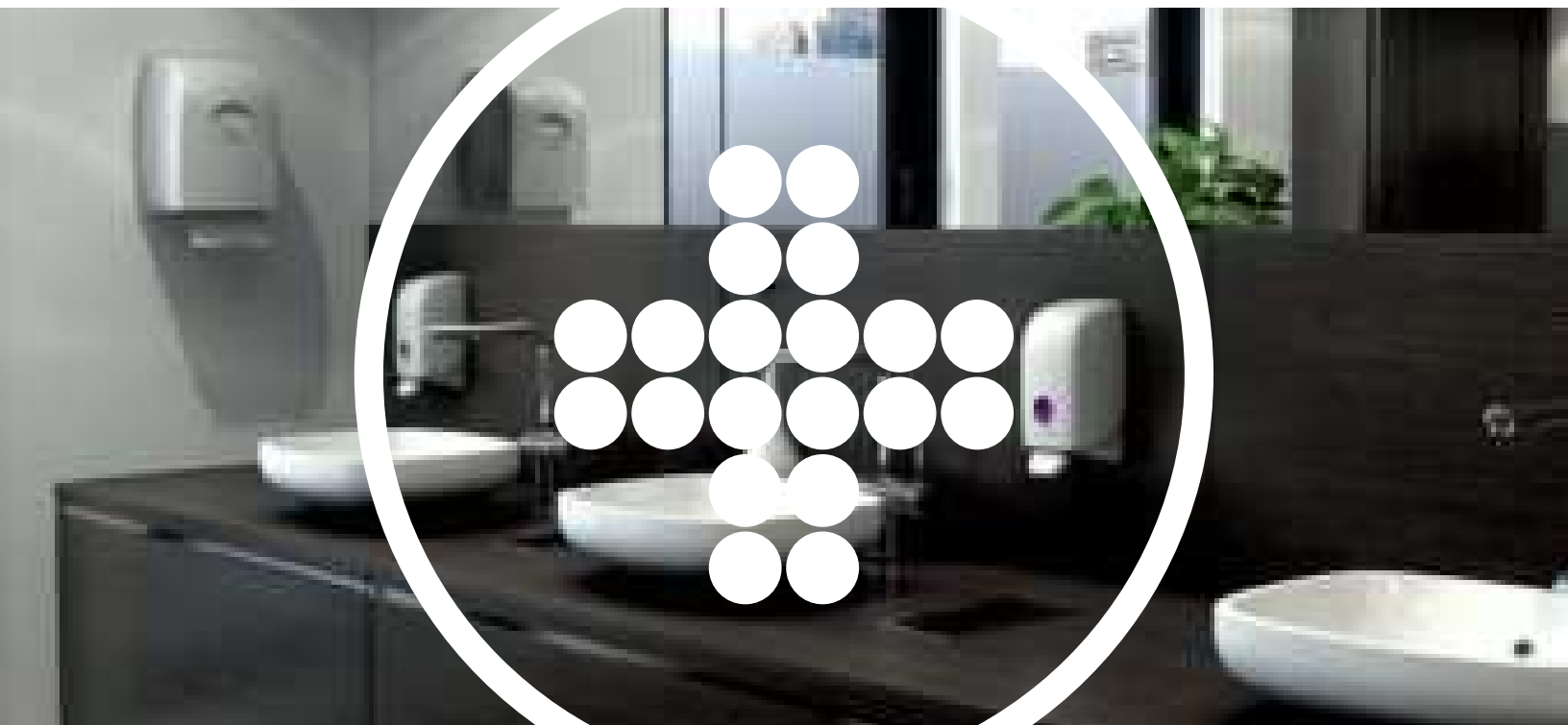
## Duro Mats

## Time Technoplast Ltd



# INDIAN NATION TRADERS

HUB FOR INDUSTRIAL SAFETY AND HYGIENE PRODUCTS



## WASHROOM SOLUTIONS

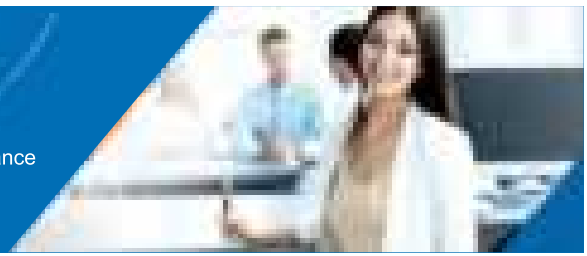
Brands you trust for the work you do



Catalogue - 2022

# Dispenser Range

A Dispenser Range that Deliver Exceptional Performance



## Hand Roll Towel Dispensers



**Kimberly-Clark PROFESSIONAL**  
Touchless Hard Roll Towel Dispenser  
Product Code : **49807**  
H44.5 x W35.9 x D26.6cm



**Scott**  
Hand Towel  
1005



**Aquarius**  
Hard Roll Towel Dispenser  
Product Code : **69590**  
H43.0 x W32.6 x D24.1cm



**Scott**  
Hand Towel  
1005



**Aquarius**  
Slimroll Hand Towel Dispenser  
Product Code : **69530**  
H34.3 x W31.8 x D19.1cm

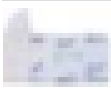


**Scott**  
Hard Roll Towel 12388,  
Kleenex 1080,  
Kimssoft 30896

## Folded Towel Dispensers



**Aquarius**  
Compact Hand Towel Dispenser  
Product Code : **70240**  
H38.0 x W23.9 x D8.1cm



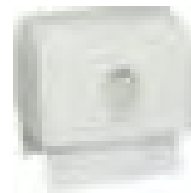
**Scott**  
Compact Hard Towel  
5855



**Aquarius**  
Multifold Hand Towel Dispenser  
Product Code : **70230**  
H45.1 x W29.4 x D12.0cm



**Scott**  
M fold Hand Towel 28620  
**Kimsoft**  
C fold Hand Towel 2150



**Aquarius**  
Compact Multifold Hand Towel Dispenser  
Product Code : **70220**  
H23.2 x W28.0 x D11.6cm



**Scott**  
M fold Hand Towel 28620  
**Kimsoft**  
C fold Hand Towel 2150

## Folded Roll Bath Tissue Dispensers



**Aquarius**  
Jumbo Roll Tissue Dispenser  
Product Code : **70260**  
H28.5 x W27.8 x D14.4cm



**Kimsoft**  
Jumbo Roll Tissue  
1164



**Aquarius**  
Hygienic Folded Tissue Dispenser  
Product Code : **69460**  
H33.8 x W16.9 x D12.3cm



**Scott**  
Bathroom Tissue  
1268



**Aquarius**  
Personal Seat Cover Dispenser  
Product Code : **69570**  
H33.20 x W44.0 x D7.7cm



**Scott**  
Personal Seat Cover  
1057

## Hand Cleanser & Sanitizer Dispensers



**Kimberly-Clark PROFESSIONAL**  
Touchless Skincare Dispenser  
Product Code : **92147**  
H29.2 x W18.41 x D10.1cm



**Scott**  
Sanitizer 30917,  
Lotion Soap 30916,  
Foam Soap 30915



**Aquarius**  
Manual Skincare Dispenser  
Product Code : **69480**  
H23.5 x W11.6 x D11.4cm



**Scott**  
Sanitizer 30909,  
Liquid Soap 30908,  
Foam Soap 30895



**Kimberly-Clark PROFESSIONAL**  
Window mini Skincare Dispenser  
Product Code : **92192**



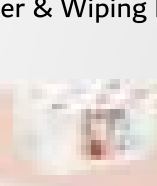
**Scott**  
Sanitizer 01357,  
Cleanser 01014,  
Cleanser 01131



## WYPALL Centrefeed Dispenser & Wiping Paper



**WypALL**  
**REACH** Centrefeed  
Hand Roll Dispenser  
Product Code : **06221**



**WypALL**  
**Food & Hygiene**  
**Wiping Paper**  
Product Code : **06222**  
Roll size : 38.0cm x 18.3cm  
Packing : 1 case = 6 roll

# Hand Towels & Paper Tissues

These Towels give you superior performance with better value for money.



## Rolled Hand Towel



**Kleenex** Hard Roll Towel

Product Code : **1080**  
Roll size : 127mtr x 20cm  
Packing : 1 case = 12 roll



**Scott** Slimroll Hand Towel

Product Code : **12388**  
Roll size : 176mtr x 20.3cm  
Packing : 1 case = 6 roll



**Scott** Hard Roll Towel

Product Code : **1005**  
Roll size : 305mtr x 20.3cm  
Packing : 1 case = 6 roll



**Scott** Essential Hard Roll Towel

Product Code : **30896**  
Roll size : 165mtr x 20.3cm  
Packing : 1 case = 9 roll

## Multi-Fold Hand Towel



**Scott** M Fold Towel

Product Code : **1222A**  
Sheet size : 21 x 22cm  
Packing : 150 sheets/pkt  
30 pkt/case



**Scott** M Fold Towel

Product Code : **28620**  
Sheet size : 24 x 19.6cm  
Packing : 250 sheets/pkt  
16 pkt/case



**Scott** M Fold Towel

Product Code : **28610**  
Sheet size : 24 x 23cm  
Packing : 250 sheets/pkt  
16 pkt/case



**Scott** Essential Slim M Fold Towel

Product Code : **41500**  
Sheet size : 21 x 22cm  
Packing : 200 sheets/pkt  
30 pkt/case

## 'C' Fold Hand Towel



**Scott** White C Fold Towel

Product Code : **1150A**  
Sheet size : 30 x 21cm  
Packing : 200 sheets/pkt  
24 pkt/case



**Kimsoft** Smile C Fold Towel

Product Code : **31500**  
Sheet size : 30 x 22cm  
Packing : 180 sheets/pkt  
30 pkt/case



**Scott** Essential Multi Fold Towel

Product Code : **32152**  
Sheet size : 20 x 21cm  
Packing : 150 sheets/pkt  
40 pkt/case



**Scott** Compact Hand Towel

Product Code : **5855A**  
Sheet size : 29.5 x 19cm  
Packing : 110 sheets/pkt  
16 pkt/case

## Tissue Paper

### Facial Tissue



**Scott** Essential Facial Tissue

Product Code : **1175**  
Sheet size : 21 x 21cm  
Packing : 100 sheets/pkt  
60 pkt/case



**Kleenex** Facial Tissue

Product Code : **1033**  
Sheet size : 21 x 21cm  
Packing : 100 sheets/pkt  
60 pkt/case



**Kleenex** Facial Tissue

Product Code : **1282**  
Packing : 80 sheets/pkt  
60 pkt/case



**Kleenex** Facial Tissue

Product Code : **1036**  
Sheet size : 16 x 21cm  
Packing : 30 sheets/pkt  
175 pkt/case



**Kleenex** Facial Tissue

Product Code : **1074**  
Sheet size : 16 x 21cm  
Packing : 50 sheets/pkt  
240 pkt/case

### Paper Napkin



**Scott** Essential Napkin

Product Code : **1324**  
Sheet size : 10.5 x 21cm  
Packing : 100 sheets/pkt  
60 pkt/case



**Scott** Paper Napkin

Product Code : **1084**  
Sheet size : 30 x 30cm  
Packing : 100 sheets/pkt  
60 pkt/case



**Kimsoft** Paper Napkin

Product Code : **1082**  
Sheet size : 30 x 30cm  
Packing : 100 sheets/pkt  
60 pkt/case



**Kimsoft** Pop-up Napkin

Product Code : **1234**  
Sheet size : 10.5 x 21cm  
Packing : 150 sheets/pkt  
150 pkt/case



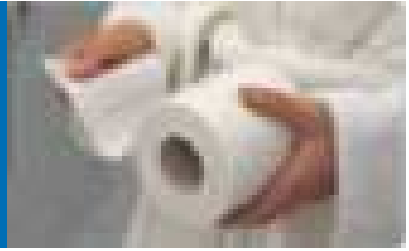
**Scott** Kitchen Roll Towel

Product Code : **1304**  
Sheet size : 11.2 x 20cm  
Packing : 125 sheets/roll  
50 roll/case



# Toilet Roll & Bathroom Tissues

Give Peoples a Feeling of Home Comfort with Toilet Rolls



## **Kleenex Toilet Roll (2 ply)**

Product Code : **1272**

Sheet size : 10cm x 11cm

Packing : 1 case = 100 rolls

1 Roll = 200 Sheets



## **Kleenex Bathroom Tissue**

Product Code : **1317**

Sheet size : 10cm x 11cm

Packing : 1 case = 200 rolls

1 Roll = 130 Sheets



## **Kleenex Bathroom Tissue**

Product Code : **1308**

Sheet size : 10cm x 11cm

Packing : 1 case = 100 rolls

1 Roll = 250 Sheets



## **Scott Toilet Roll (2 ply)**

Product Code : **1276**

Sheet size : 10 cm x 11 cm

Packing : 1 Case = 200 Rolls

1 Roll = 130 Sheets



## **Scott Bathroom Tissue**

Product Code : **4001**

Sheet size : 11 cm x 10 cm

Packing : 1 Case = 80 Rolls

1 Roll = 375 Sheets



## **Scott Bathroom Tissue**

Product Code : **4002A**

Sheet size : 10 cm x 9.5 cm

Packing : 1 Case = 160 Rolls

1 Roll = 230 Sheets



## **Scott Bathroom Tissue**

Product Code : **4002B**

Sheet size : 10 cm x 11 cm

Packing : 1 Case = 200 Rolls

1 Roll = 200 Sheets



## **Scott Bathroom Tissue**

Product Code : **1192**

Sheet size : 10 cm x 11 cm

Packing : 1 Case = 150 Rolls

1 Roll = 150 Sheets



## **Scott Bathroom Tissue**

Product Code : **1268**

Sheet size : 10.5cm x 21cm

Packing : 1 Case = 100 pkt

1 pkt = 125 Sheets



## **Scott Jumbo Roll Tissue**

Product Code : **1164**

Roll size : 225 mtr x 90 mm

Packing : 1 Case = 8 Rolls



## **Scott Jumbo Roll Tissue**

Product Code : **1343**

Roll size : 300 mtr x 90 mm

Packing : 1 Case = 8 Rolls



## **Scott Personal Seat Cover**

Product Code : **01057**

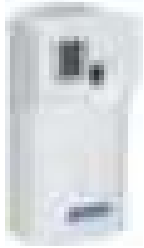
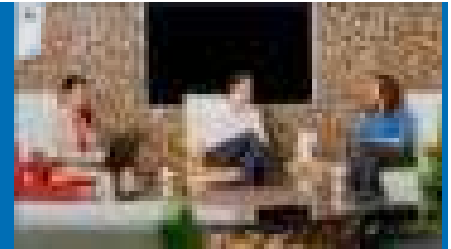
Sheet size : 44cm x 36cm

Packing : 1 Case = 20 pkt

1 pkt = 100 Sheets

# Aircare Dispenser & Refills

Taking Hygiene to the Next Level



## Micromist Dipenser

Product Code : **9600**

H16.8 x W8.4 x D5.0 cm



Kimcare

## Micromist "Fresh Linen" (Fragrance Refill)

Product Code : **6890**

Capacity : 54 ml  
Packing : 1 case = 12 refills



Kimcare

## Micromist "Forest Dew" (Fragrance Refill)

Product Code : **6892**

Capacity : 54 ml  
Packing : 1 case = 12 refills



Kimcare

## Micromist "Spring Breeze" (Fragrance Refill)

Product Code : **6893**

Capacity : 54 ml  
Packing : 1 case = 12 refills



## Aircare Dipenser

Product Code : **69940**

H20.0 x W15.4 x D15.0 cm



Kimberly-Clark

## Harmony Fragrance (Refill)

Product Code : **6181**

Capacity : 300 ml  
Packing : 1 case = 6 refills



Kimberly-Clark

## Energy Fragrance (Refill)

Product Code : **6182**

Capacity : 300 ml  
Packing : 1 case = 6 refills



Kimberly-Clark

## Joy Fragrance (Refill)

Product Code : **6183**

Capacity : 300 ml  
Packing : 1 case = 6 refills



Kimberly-Clark

## Fresh Fragrance (Refill)

Product Code : **6184**

Capacity : 300 ml  
Packing : 1 case = 6 refills



## Midi Aerosol Dipenser (Semi-Automatic)



## InnoFresh Burst (Fragrance Refill)

Capacity : 100 ml  
Packing : 1 case = 12 refills



## InnoFresh Sparkle (Fragrance Refill)

Capacity : 100 ml  
Packing : 1 case = 12 refills



## InnoFresh Fleur (Fragrance Refill)

Capacity : 100 ml  
Packing : 1 case = 12 refills



## InnoFresh Finesse (Fragrance Refill)

Capacity : 100 ml  
Packing : 1 case = 12 refills



## InnoFresh Terra (Fragrance Refill)

Capacity : 100 ml  
Packing : 1 case = 12 refills



## InnoFresh Oudh Royal (Fragrance Refill)

Capacity : 100 ml  
Packing : 1 case = 12 refills



## Max Dipenser (Semi-Automatic)



## InnoFresh Garden Fresh (Fragrance Refill)

Capacity : 250 ml  
Packing : 1 case = 12 refills



## InnoFresh Uodh Royal (Fragrance Refill)

Capacity : 250 ml  
Packing : 1 case = 12 refills



## InnoFresh Petal (Fragrance Refill)

Capacity : 250 ml  
Packing : 1 case = 12 refills



## InnoFresh Crisp Morning (Fragrance Refill)

Capacity : 250 ml  
Packing : 1 case = 12 refills

# Hand Cleansers & Sanitizers

Gentle, Everyday Formulas to Effectively Clean and Care for Your Skin



## Hand Cleansers



1000 ml.

**Scott's** Luxury Foam Soap

Product Code : **30895**

Packing : 1 case = 6 unit

( Compatible Dispenser : 69480 )



1000 ml.

**Scott's** Gentle Lotion Cleanser

Product Code : **30908**

Packing : 1 case = 6 unit

( Compatible Dispenser : 69480 )



1200 ml.

**Scott's** Gentle Foam Soap Lotion

Product Code : **30915**

Packing : 1 case = 6 unit

( Compatible Dispenser : 92147 )



1200 ml.

**Scott's** Gentle Lotion Cleanser

Product Code : **30916**

Packing : 1 case = 6 unit

( Compatible Dispenser : 92147 )



5 Ltr.



**Microderm Cleanser**

( Colourless/Odourless )

Product Code : **30891**

Packing : 1 can



5 ltr.



**Gentle Lotion Skin Cleanser**

Product Code : **01267**

Packing : 1 can



500 ml.



**Gentle Lotion Skin Cleanser**

Product Code : **01014**

Packing : 1 case = 18 refill

( Compatible Dispenser : 92192 )



500 ml.



**Microderm Hand Cleanser**

Product Code : **1131**

Packing : 1 case = 20 refill

( Compatible Dispenser : 92192 )

## Hand Sanitizers



50 ml.



**Gentle Hand Sanitizer**

Product Code : **01382**

Packing : 1 case = 50 unit



250 ml.



**Gentle Hand Sanitizer**

Product Code : **30890**

Packing : 1 case = 40 unit



1000 ml.



**Instant Hand Sanitizer**

Product Code : **30909**

Packing : 1 case = 6 unit!  
( Compatible Dispenser : 69480 )



1200 ml.



**Instant Hand Sanitizer**

Product Code : **30917**

Packing : 1 case = 6 unit!  
( Compatible Dispenser : 92147 )



500 ml.



**Gentle Hand Sanitizer**

Product Code : **01357**

Packing : 1 case = 18 unit

( Compatible Dispenser : 92192 )



5 Ltr.



**Instant Hand Sanitizer**

Product Code : **30912**

Packing : 1 can



500 ml.



**Instant Hand Sanitizer**

Product Code : **30913**

Packing : 1 case = 20 unit



5 Ltr.



**Multi Surface Disinfectant**

Product Code : **30921**

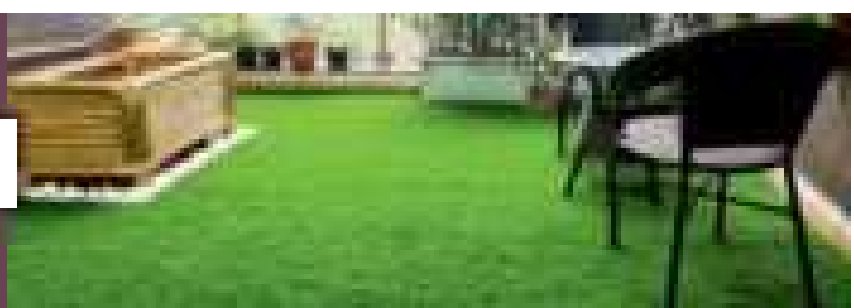
Packing : 1 can



DIFFERENT REQUIREMENTS.  
DIFFERENT MATS.  
ONE NAME :



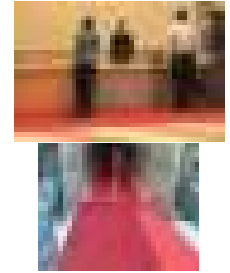
**uro Mats**



Experience a better, beautiful and reliable way to protect your ambience against dirt & grime. Designed to appeal to your aesthetic senses, DuroSoft mats' intricate and attractive 'Random Loop Structure' provides a forceful brushing action that traps dirt & dust.



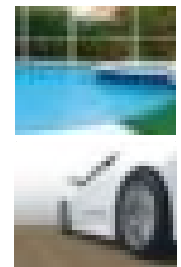
		DuroSoft Random Loop	DuroSoft Random Loop	DuroSoft Random Loop
Color	Green, Blue	Green, Blue	Green, Blue	Green, Blue
Material	Polypropylene	Polypropylene	Polypropylene	Polypropylene
Weight	1.5 kg/sqm	1.5 kg/sqm	1.5 kg/sqm	1.5 kg/sqm
Width	3m	3m	3m	3m
Length	10m	10m	10m	10m
Installation	Adhesive, Glueless	Adhesive, Glueless	Adhesive, Glueless	Adhesive, Glueless
Applications	Indoor, Outdoor	Indoor, Outdoor	Indoor, Outdoor	Indoor, Outdoor



DuroWipe is not like other mats. It is rugged enough to remove dirt and water from shoes, trolleys and even vehicles to keep the floor sparkling clean. It comes with a unique 'Twin Blade Operation', which has been specifically pioneered to wipe out dirt and suck out water from the footwear/feet in one single wipe.



		DuroWipe Twin Blade	DuroWipe Twin Blade
Color	Green, Maroon	Green, Maroon	Green, Maroon
Material	Polypropylene	Polypropylene	Polypropylene
Weight	1.5 kg/sqm	1.5 kg/sqm	1.5 kg/sqm
Width	3m	3m	3m
Length	10m	10m	10m
Installation	Adhesive, Glueless	Adhesive, Glueless	Adhesive, Glueless
Applications	Indoor, Outdoor	Indoor, Outdoor	Indoor, Outdoor

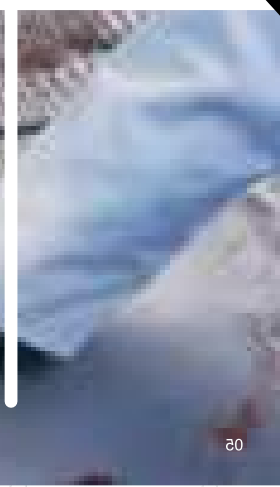
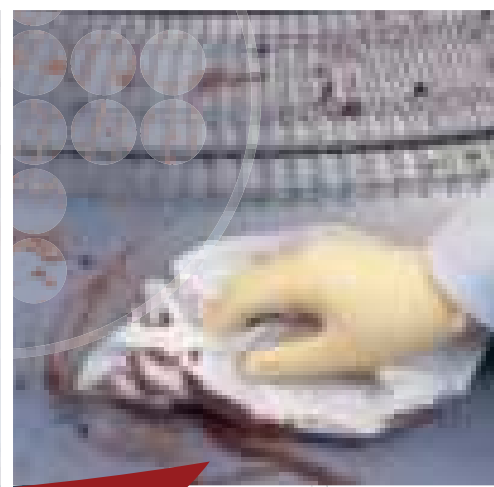
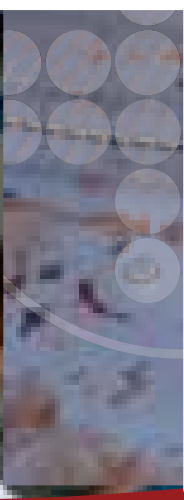


DuroTurf, the undisputed market leader in the turf-matting segment, caters to industries across the country. Made from high-grade polymer with advanced technology, DuroTurfs specially designed tufts scrape the dirt and muck off the footwear and keep it out of sight to give you an aesthetically beautiful entrance.



		DuroTurf Turf	DuroTurf Turf
Color	Green, Red	Green, Red	Green, Red
Material	Polypropylene	Polypropylene	Polypropylene
Weight	1.5 kg/sqm	1.5 kg/sqm	1.5 kg/sqm
Width	3m	3m	3m
Length	10m	10m	10m
Installation	Adhesive, Glueless	Adhesive, Glueless	Adhesive, Glueless
Applications	Indoor, Outdoor	Indoor, Outdoor	Indoor, Outdoor





20

# **WYPALL\*** **KIMTECH\***

Selecting the right wiper for your need



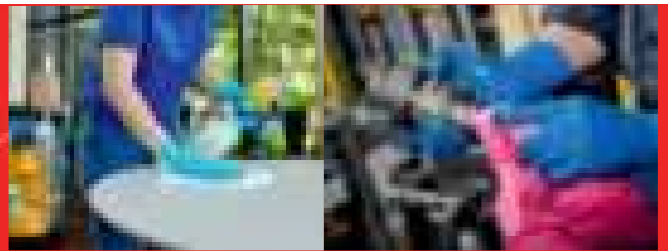
# Your Easy Selection Guide

This table illustrates specific wiping features and most appropriate usage, helping you to quickly identify the best wiping solutions for your needs. We will support you in selecting the right solution for your application. Please consult the product pages for more specific examples.

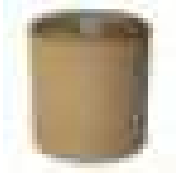
ABSORBENCY	STRENGTH <sup>#</sup>	ROUGH SURFACES	OIL & GREASE	SOLVENTS	LIQUID SPILLAGE	DUST & GRIME	DELICATE SURFACES	PRODUCT SOLUTION
<b>RE-USABLE</b>								
	6							WYPALL* X80 Cloths
	5							WYPALL* X70 Cloths
	4							WYPALL* X60 Cloths
<b>LIMITED USE</b>								
	2							WYPALL* L40 Wipers
	1							WYPALL* L20 Wipers
	1							WYPALL* L10 Wipers
<b>SPECIALITIES</b>								
	10							WYPALL* Microfibre Cleaning Cloths
	2							WYPALL* Cleaning Wipes
Task specific wiping solutions								KIMTECH* Wipers
Industry specific surface wiping solutions								WETTASK* System



# WypAll\* Wipers — The Right Tool



## WypAll\* L10 Wipers



1353A




1380A



28888




1121A

Code	Delivery System	Color	Size (centimeters)	Case Count	Sheets Per Box/Pouch	
1353A	Roll		Brown	20.0cm x 300mtr	8 Rolls	300 Mtr. Each
1380A	Roll		White	18.2cmx 300mtr	8 Rolls	300 Mtr. Each
28888	Roll		White	18.0cmx 300mtr	6 Rolls	300 Mtr. each
1121A	Rolls		Brown	24.3cmx 300mtr	8 Rolls	300 Mtr. Each

## WypAll\* L20 Wipers



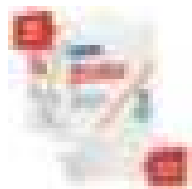
7300

Code	Delivery System	Color	Size (centimeters)	Case Count	Sheets Per Box/Pouch
7300	Roll } 	Blue	38.0cm x 23.5cm	1 Roll	500 Sheets



## WypAll\* L30 /L40 Wipers



74250



05701

Code	Delivery System	Color	Size (centimeters)	Case Count	Sheets Per Box/Pouch
74250	Roll } 	Blue	23.5cm x 38.0cm	1 Roll	750 Sheets
05701	1/4Fold } 	White	31.7cm x 33.0cm	18 Packet	56 Sheets Per Pkt.

## WypAll\* X60 Wipers



34790

Code	Delivery System	Color	Size (centimeters)	Case Count	Sheets Per Box/Pouch
34790	Pop-Up Box } 	White	23.1cm x 42.7cm	10 Packet	126 Sheets Per Pkt.

## WypAll\* X70 Wipers



1355



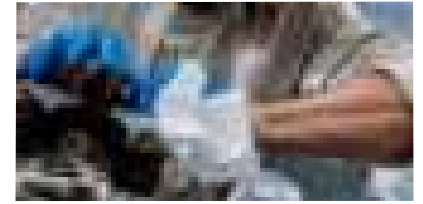
1366



3024



1340



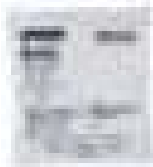
Code	Delivery System	Color	Size (centimeters)	Case Count	Sheets Per Box/Pouch
1355	Roll	White	24.7cm x 38.0cm	4 Rolls	100 Mtr. Each
1366	Roll	Blue	24.7cm x 38.0cm	4 Rolls	100 Mtr. Each
3024	Roll	Blue	24.7cm x 20.0cm	4 Rolls	100 Mtr. Each
1340	Roll	White	24.7cm x 20.0cm	4 Rolls	100 Mtr. Each



1305



1110



1306



1112

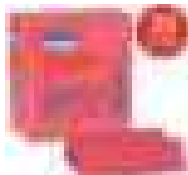
Code	Delivery System	Color	Size (centimeters)	Case Count	Sheets Per Box/Pouch
1305	Flat Sheets	White	25.4cm x 38.1cm	20 Pouch	50 Wiper Per Pouch
1110	Flat Sheets	Blue	25.4cm x 38.1cm	20 Pouch	50 Wiper Per Pouch
1306	Flat Sheets	White	25.4cm x 25.4cm	20 Pouch	50 Wiper Per pouch
1112	Flat Sheets	Blue	25.4cm x 25.4cm	20 Pouch	50 Wiper Per Pouch



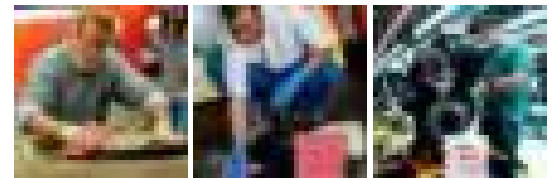
## WypAll\* X80 Wipers



41026



41029



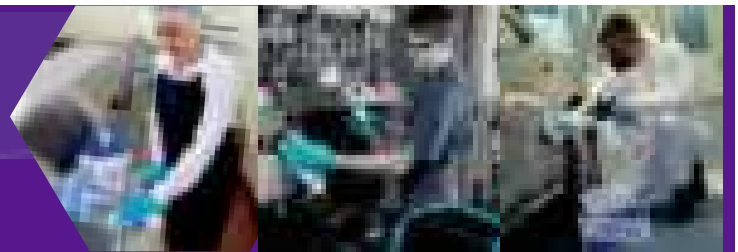
Code	Delivery System	Color	Size (centimeters)	Case Count	Sheets Per Box/Pouch
41026	1/4 Fold	White	31.75cm x 30.48cm	4 Pouch	50 Wiper Per Pouch
41029	1/4 Fold	Red	31.75cm x 30.48cm	4 Pouch	50 Wiper Per Pouch



## WypAll\* Microfiber Cloths



Code	Delivery System	Color	Size (centimeters)	Case Count	Sheets Per Box/Pouch
83610	General Purpose	Yellow	40cm x 40cm	4 Pack	6 Cloths
83620	General Purpose	Blue	40cm x 40cm	4 Pack	6 Cloths
83630	General Purpose	Green	40cm x 40cm	4 Pack	6 Cloths



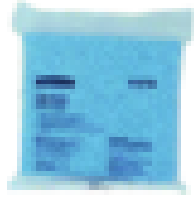
Kimtech\* Prep Wipes - Dry



1030



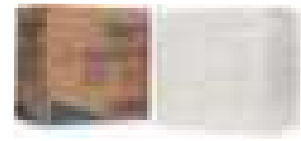
1031



1373



7580



07642

Code	Delivery System	Color	Size (centimeters)	Case Count	Sheets Per Box/Pouch
1030	Flat Sheet	White	30.5cm x 35.5cm	8 Pouches	50 Sheets
1031	Flat Sheet				
1373	Flat Sheet				
7580	Pop-Up * Box	White	30.5 cm x 30.5 cm	4 Box	200 Sheets
07642	Flat Sheet	White	40 cm x 50 cm	1 Pouch	500 Sheets



3022

Code	Delivery System	Color	Size (centimeters)	Case Count	Sheets Per Box/Pouch
3022	Roll	Blue	23.0 cm x 38.0 cm	4 Rolls	100 Mtr. Each

Kimtech\* Prep WETTASK\* Wipes



06001



30902



Code	Delivery System	Color	Size (centimeters)	Case Count	Sheets Per Box/Pouch
06001	Roll	White	30.5 cm x 31.8 cm	6 Roll+Bucket	60 Sheets
30902	Roll	White	30.5 cm x 31.5 cm	6 Rolls+Bucket	90 Sheets

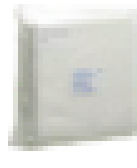
## Kimtech\* Tack Cloth, Microfiber Cloth, & Polyester Wipes



7589



30903



38714



38712



7585

Code	Delivery System	Color	Size (centimeters)	Case Count	Sheets Per Box/Pouch
7589	Folded Sheet	Blue	40.0 cm x 40.0 cm	1 Box	25 Sheets
30903	Flat Sheet	White	30.5 cm x 35.5 cm	8 Pouches	100 Sheets
38714	Flat Sheet	White	40.0 cm x 40.0 cm	12 Pouches	30 Sheets
38712	Flat Sheet	Cream	22.9 cm x 30.5 cm	4 Pouches	100 Sheets
7585	Half-Fold	White	22.8 cm x 40.6 cm	4 Pouches	100 Sheets

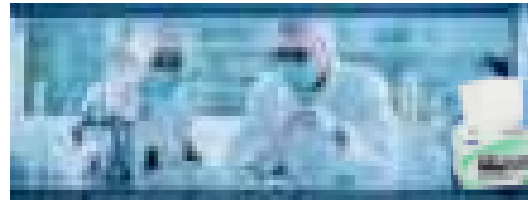
## Kimtech\* Science\* Delicate Task Wipes



34155



34256



Code	Delivery System	Color	Size (centimeters)	Case Count	Sheets Per Box/Pouch
34155	Pop-Up * Box	White	11.2 cm x 21.3 cm	60 Box	280 Sheets
34256	Pop-Up * Box	White	37.0 cm x 42.0 cm	15 Boxes	140 Sheets

## Kimtech\* Pure\* W4 Wipers



33330

Code	Delivery System	Color	Size (centimeters)	Case Count	Sheets Per Box/Pouch
33330	Flat Sheet	White	30.5 cm x 30.5 cm	5 Pouch	100 Sheets

## Kimtech\* Auto Polishing Cloths



76350

Code	Delivery System	Color	Size (centimeters)	Case Count	Sheets Per Box/Pouch
76350	Polishing Cloth	Blue	39.0 cm x 39.0 cm	25 Sheet	1 Sheet



**KIMTECH™**

**KLEENGUARD™**



Catalogue - 2022



# INDIAN NATION TRADERS

HUB FOR INDUSTRIAL SAFETY AND HYGIENE PRODUCTS





# Examination Glove Range

Working Hand in Hand to Protect the Scientist and the Science



**PERFORMANCE**

- Beaded cuffs to make donning easier and prevent roll down
- Ambidextrous with textured fingertips for enhanced grip
- Excellent dexterity and tactile sensitivity
- Static dissipative in use

**COMFORT**

- Powder-free to minimize contamination risk and skin irritation
- Not made with natural rubber latex

**TYPICAL USES**

- General Handling
- Laboratory
- Janitorial
- Cleaning & maintenance
- Public Authorities
- Food processing
- Inspection
- Electronic assembly

## KIMTECH™

### Kimtech Purple Nitrile-Xtra™ Gloves



*Maximum protection for higher-risk procedures*



**CE 0123**

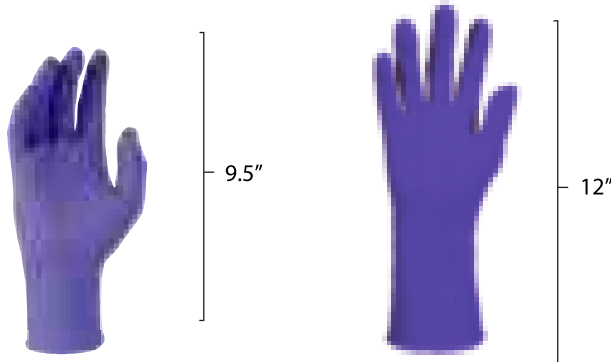
**Product Features:**

- 6 mil Thickness
- AQL 0.65
- Meets (level 3) G1 Inspection for water tightness
- This is a PPE Category III product classified by EC Council Directive 89/686/EEC.
- Manufactured in accordance with Quality System ISO 9001
- Virus protection according to ISO 16604 procedure B:2004
- Dexterity Classification (EN 420:2003)

### Kimtech Purple Nitrile-Xtra™ Exam Gloves (KC-500)



*Maximum protection for higher-risk procedures*



**CE 0123**

**Product Features:**

- 6 mil Thickness
- AQL 1.0
- KIMBERLY-CLARK® PURPLE NITRILE-XTRA, EXAM Gloves material was tested for use with 10 chemotherapy drugs and glutaraldehyde
- PURPLE NITRILE-XTRA® Exam Gloves meet NFPA Standards 1999:2008

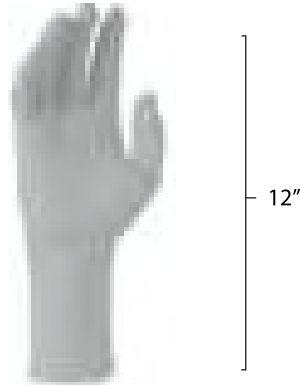
Description	Small	Medium	Large	Gloves / Box	Boxes / Case
Kimtech Purple Nitrile-Xtra Gloves, 12"	97611	97612	97613	50	10
Kimtech Purple Nitrile Exam Gloves, 9.5"	55081	55082	55083	100	10
Kimtech Purple Nitrile-Xtra Exam Gloves, 12"	50601	50602	50603	50	10

# KIMTECH™

## Kimtech Sterling™ Nitrile-Exam Gloves



Provides the protection of nitrile with the sensitivity of latex for everyday use



### Product Features:

- 3.5 mil Thickness
- AQL 1.5
- Meets USP <800> guidelines
- Cleared for use in chemotherapy
- Sterling Nitrile-Xtra 12" Gloves meet NFPA standard 1999:2013 for protecting EMS workers against liquid-borne pathogens

Description	Small	Medium	Large	Gloves / Box	Boxes / Case
Kimtech Purple Nitrile-Xtra Exam Gloves, 12"	53138	53139	53140	100	10

## Kimtech™ Opal Dark Blue Nitrile Gloves



Guard against contamination by chemical splash and micro-organism hazards



CE 2797

UK CA 0086

### Product Features:

- 2.8 mil of fingers thickness: Enhance grip and tactile sensitivity for safer and more efficient process.
- Formulated without Thiurams, Thiazoles, Guanidines, Carbamates, and no added sulphur
- Comply with FDA regulations for materials used in food contact applications.
- Dark Colour that enhance concentration on task compared to light-colored gloves
- Powder-free, ambidextrous, and are not made with natural rubber latex.
- PPE Cat III (EU)

Description	Small	Medium	Large	Gloves / Box	Boxes / Case
Kimtech™ Opal Dark Blue Nitrile Gloves, 9.5"	62881	62882	62883	200	10

**G10 KleenGuard™ Flex Blue Nitrile Gloves**



*Protection for various light-duty jobs*



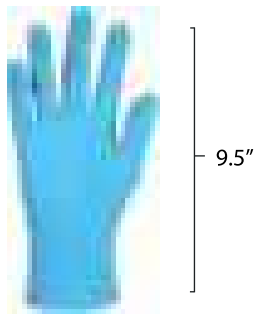
**Product Features:**

- AQL : 1.5
- 3 mil finger thickness
- High disposability for light-duty tasks with short durations
- General maintenance Light duty manufacturing
- Meets US FDA regulations for materials used in food contact applications

**G10 KleenGuard™ Comfort Plus Blue Nitrile Gloves**



*Balance between Strength and Tactile sensitivity*



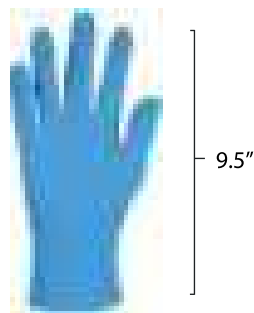
**Product Features:**

- AQL : 2.5
- 4 mil finger thickness
- High disposability for light-duty tasks with short durations
- General maintenance Light duty manufacturing
- Meets US FDA regulations for repeated food contact.
- Category I PPE (CE Simple) according to the Regulation (EU) 2016/425

**G10 KleenGuard™ 2 Pro Blue Nitrile Gloves**



*Durability and Strength*



**Product Features:**

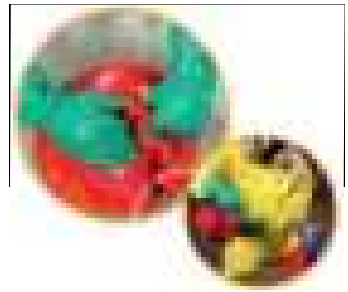
- AQL : 1.5
- 6 mil of fingers thickness: **Durability and Strength** for the most demanding light-duty tasks.
- High disposability for light-duty tasks with short durations
- General maintenance Light duty manufacturing
- Meets US FDA regulations for repeated food contact(21 CFR Sections 177.2600).
- Category I PPE (CE Simple) according to the Regulation (EU) 2016/425

Description	Small	Medium	Large	Gloves / Box	Boxes / Case
Flex Blue Nitrile Gloves, 9.5"	54332	54333	54334	100	10
Comfort-Plus Blue Nitrile Gloves, 9.5"	54186	54187	54188	100	10
2 Pro Blue Nitrile Gloves, 9.5"	54421	54422	54423	100	10



# Chemical Resistance Nitrile Gloves

High abrasion resistance



### PERFORMANCE

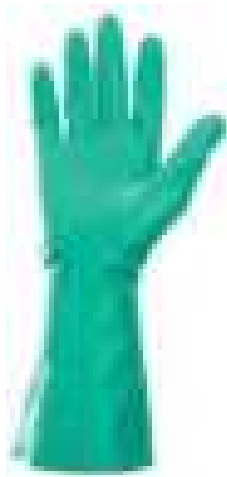
- PPE Category III Protection with Level 4 Abrasive resistance - providing chemical resistance and durability
- Standard EN - 374 | Heat Resistance
- Flock liner - wicks sweat away from the hand for improved comfort and easier donning/doffing

### TYPICAL USES

- Chemical processing, Oil refining, Fabrication
- Automotive assembly and painting
- Aerospace or automotive degreasing
- Janitorial and public cleaning
- Cleaning and food handling in food industries

## G80 KleenGuard™ Chemical Resistance Nitrile Gloves

Protection against oils, fuels, solvents, grease, acids and caustics



13"



JKLNOP  
CE 0120

### Product Features:

- AQL 0.65 to provide superior protection, more productivity and efficiency
- 15 mil Thickness
- Improved more consistent cotton flock lined for added comfort
- The diamond embossed structure provides excellent grip
- Modified Nitrile formulation for more durability and enhanced chemical resistance

## G40 KleenGuard™ Latex Coated Gloves

Comfortable protection with superior grip and dexterity



### Product Features:

- Crinkled latex coating for excellent dry grip, dexterity and palm protection
- EN 407 contact heat level 2 to provide intermittent heat contact protection up to 250°C
- PPE Category I (CE Simple) product classified by EC Council Directive 89/686/EEC

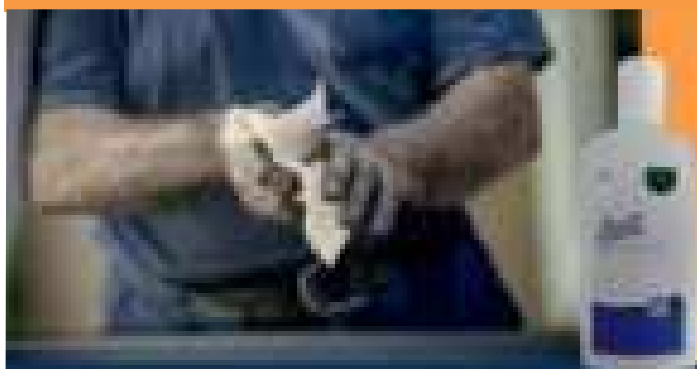
### TYPICAL USES

- General Handling, Manufacturing
- Transport, Construction
- Metal handling, Public sector
- Automotive and Aerospace assembly

Description	Medium	Large	Gloves / Box	Boxes / Case
Chemical Resistance Nitrile Gloves, 13"	94446	94447	24	5
Latex Coated Gloves	97271	97272	12 pair	5



Working hands are subject to onslaught of harsh chemicals and hence require **Extra Care & Protection**



## SUPER DUTY HAND CLEANSER WITH GRIT



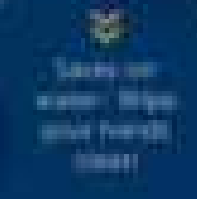
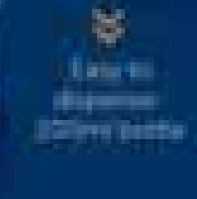
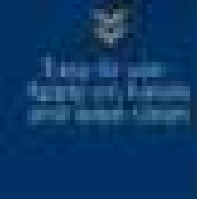
Formulated with Water proof, long lasting active ingredients



Removes dirt and grime



Removes oils and greases



## HOW TO USE?



Description	Capacity	Product Code	Case Count
super duty hand cleanser with grit	200 ml	1377A	40 Bottles



# RESPIRATORY PROTECTION

SAFETY  
TRUST  
VERSATILITY

NEW  
ARRIVAL



TW01S



TW088



TW  
TwoWay

*Safety Style*  
with

TW02S



Windy

P APR

**Made in Japan**

With 100 years of research development experience and "Made in Japan" quality, SHIGEMATSU WORKS CO., LTD.(STS) is the brand you can trust.

## Business Line

Manufacture and sales of Personal Protective Equipment, Respiratory Protective Device, and other equipment for emergency escape, fire fighting and rescue operation, etc.

**SHIGEMATSU WORKS CO., LTD.**

[www.sts-japan.com](http://www.sts-japan.com)

TW is a new style respirator which has no stress to replace filter. You can choose 2 series of filter. X series are light type filter, and they provide wide view. T series are standard type filter, and they suit in daily work.

## TW01SC

JAPANESE GOVERNMENT STANDARDS • TN529



Can be used with Particle & Gas Filter



Particulate Filter

Wide View

New design which provides wide under view due to the position of exhalation valve.

Filter checker

Built-in type



Compatible Cartridges for TW Series

### X-series



X3 Filter  
99.9% Efficiency



XL3/OV Filter  
99.99% Efficiency



X/OV Filter  
99.9% Efficiency



X2 Filter  
96.0% Efficiency

### T-series



T2 Filter  
96.0% Efficiency



T/OV Filter



T/HG/AG Filter  
80.0% Efficiency



T/AM Filter

## TW02S

JAPANESE GOVERNMENT STANDARDS • TN494

Drop Down  
Head Harness

Wide View Compact Type

Weight : 140g  
without filter

Organic Vapor Filter

Can be used with  
Particle & Gas Filter



4 times  
longer filter  
life-time  
than single  
type mask!

## TW08S

JAPANESE GOVERNMENT STANDARDS • TN544

Embossed Surface  
( TPE Facepiece )

Speech Diaphragm

It enables you to  
communicate better  
at work

Weight : 165g  
without filter

Particulate Filter

Can be used with  
Particle & Gas Filter





## TW088

JAPANESE GOVERNMENT STANDARDS • TN450

Tw088 Full Face reusable respirator, with a 6-point head harness gives more adjustment and a better fit.



Can be used with Particle & Gas Filter

6-Point Head Harness

It gives more stability and firm fit.

Widest Polycarbonate 3D-curve Visor  
(Inside:Anti-fog Coated)  
(Outside:Anti-scratch Coated)

Weight : 360g

without filter

Designed to use with a safety Helmet and Coveralls

Speech Diaphragm

It enables you to communicate better at work

- Facepiece Material : TPE(Styrene Elastomer)
- Weight : <=360g(M)
- TPE(Elastomer) is mixed rubber.
- **Speech diaphragm allows you communicate while wearing.**
- Visor protects your eyes from spatter or splash.
- Working efficiency is especially considered for design.
- **Designed to use with a safety Helmet and Coveralls.**
- Good fitting even with a safety Helmet.

Safety  
with  
Style

## GM77/ME

JAPANESE GOVERNMENT STANDARDS - TN5 TN15

Singal Cartridge Mask



light Weight : 93g

without filter

Heat Resistance & Cold Tolerance

Organic Vapor Filter



## GM28S

JAPANESE GOVERNMENT STANDARDS - TN392

Dual Cartridge Mask



light Weight : 220g

without filter

Embossed Surface ( TPE Facepiece )  
Heat Resistance & Cold Tolerance

Organic Vapor Filter



## GM76DS

JAPANESE GOVERNMENT STANDARDS - TN374

Singal Cartridge Mask

light Weight : 150g

without filter



## DR10R

JAPANESE GOVERNMENT STANDARDS • TN513

**NEW**

Clear-sight and compact respirator

Very Light Weight  
70g

Weight : 70g  
without filter

Wet & Dry Particulate Filter



**Economical due to Replacement of Filter Element Only!!**

## DR77R

JAPANESE GOVERNMENT STANDARDS • TN203

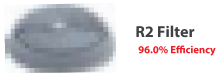
Wet & Dry Particulate Filter

Weight : 120g  
without filter



**Compatible Filters**

Wet & Dry Particulates



# Powered Air Purifying Respirator (PAPR) (with HEPA FILTER)

*Breathing Easy  
and Safe*

## W80E3H1

JAPANESE GOVERNMENT STANDARDS • TP38

Shigematsu's W80e3h1 is a powered air purifying respirator (papr) for healthcare professionals in clinical environments that call for long hours of work with safety and comfort. This provides the wearer with safe, filtered air and allows comfortable usage for many hours. Respiratory protection systems can offer comfortable, integrated protection against multiple hazards helping to provide respiratory, head, face, eye and hearing protection.

**Weight : 1465g**



**HOOD HD-H1**



**FILTER E3**

**99.97%** Filter Efficiency



**FAN-UNIT FU80**



**Battery BA-L4K**

**6.0 h** battery Life



**Charger CH-L4KAA**

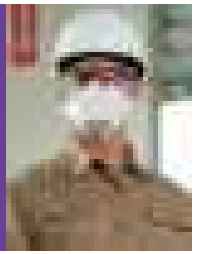
**4.0 h** Charging Time

IP51



**KIMTECH™**

# For Performance, Protection and Comfort

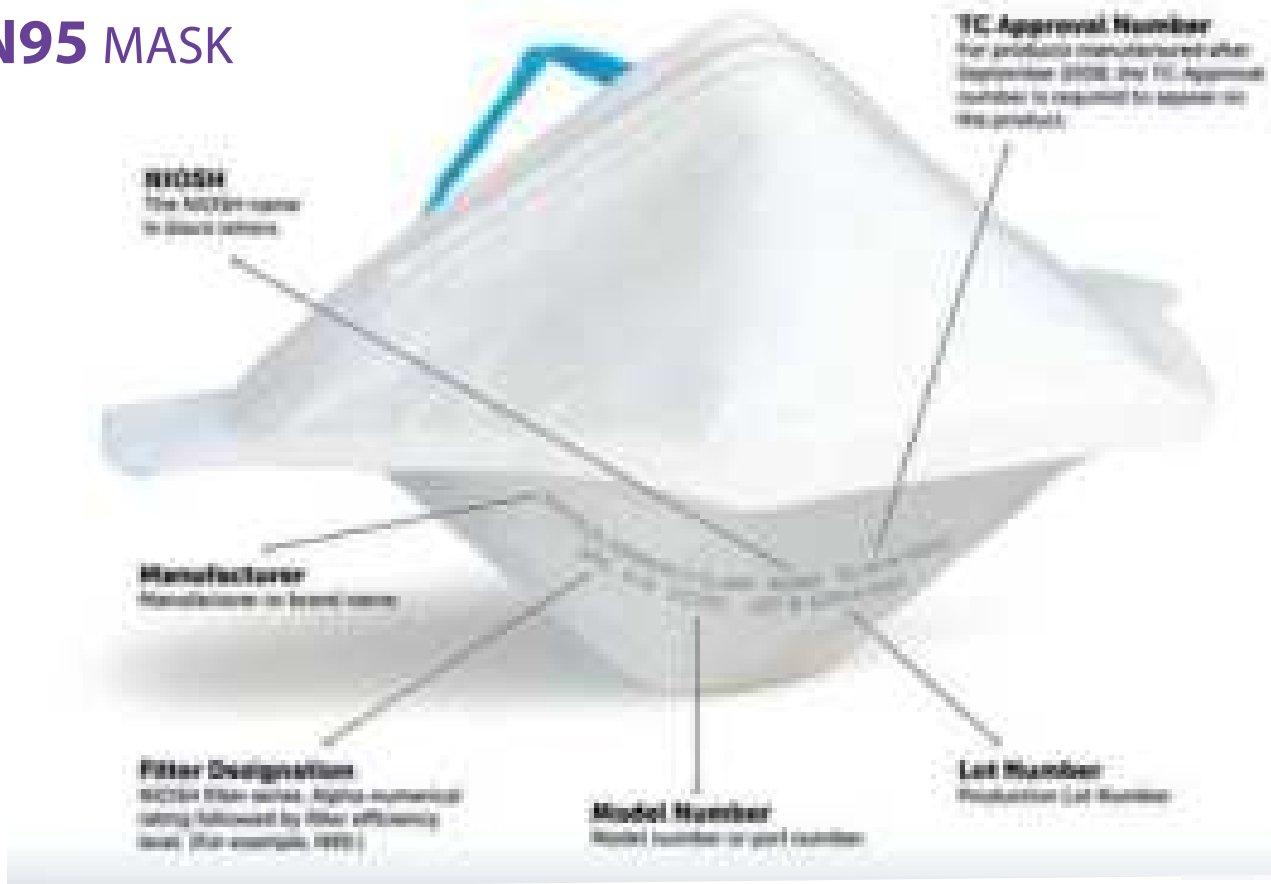


Filtering efficiency **95%**

Certified by **NIOSH®**

To guard against the risk posed by airborne particles and contaminants, you need a respirator that provides highest comfort and protection level

## KIMTECH™ N95 MASK



- Made in the USA, TAA Compliant
- Pouch design with a large breathing chamber for added comfort
- Up to 70% more breathable than the minimum NIOSH requirement
- NIOSH Approved: Provides a minimum 95% filtration efficiency of 0.3 micron particles

Product	Code	Quantity Per Pack	Quantity Per Case
<b>KIMTECH™</b> N95 Mask	<b>53358</b>	50 Mask	6 Packs

## With Valve



### Exhalation Valve

Reduce discomfort due to warm air and sweatiness.

(10 pcs/pack)

**DD02V-N95-2K**

NIOSH Approval No.TC-84A-7645

Product Code

30375

## Without Valve



(10 pcs/pack)

**DD02-N95-2K**

NIOSH Approval No.TC-84A-7646

Product Code

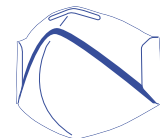
30370

Filtering efficiency : 95% or more  
 Inhalation resistance :55Pa or less  
 Exhalation resistance :45Pa or less  
 Weight : 11g or less  
 Service life : 19h

Certified by :

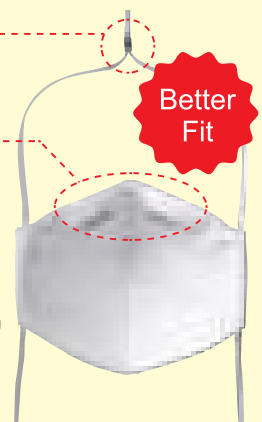


Lambda-line is the nickname for the respirator with a  $\Lambda$  (lambda)-shaped retaining tape that firmly keeps its original 3D structure.



Picture shows DD02-N95-2K

- 1 Adjuster  
Head strap length is adjustable.  
Material : polyurethane
- 2 Nose Cushion  
Nose cushion on underside of respirator for better air tightness, preventing outside air from entering.
- 3 Nose Clip  
Nose clip on outside of respirator enable fitting to the shape of the wearer's nose.

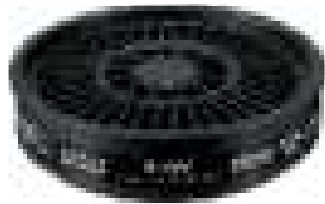


## ORGANIC VAPOR FILTER X/OV

CODE: 12300

### X/OV Filter

- Offers protection when working with organic solvents.
- Twist lock connection to STS masks is quick and easy to secure..
- It can resist up to 0.1 micron for liquid and 0.06 micron for Solid Particles.
- Repels Liquid or Solid particles both.
- Compatible masks: TW01SC, TW02S, TW088.
- Weight: 55gm.



**99.9% Efficiency**

## PARTICLE FILTER X2

CODE: 11085

### X2 Filter

- Offers protection when working with dry and wet particles.
- Twist lock connection to STS masks is quick and easy to secure..
- It can resist up to 0.1 micron for liquid and 0.06 micron for Solid Particles.
- It's can Activated Carbon Fiber repels any kind of fouling or unpleasant smell.
- Repels Liquid or Solid particles both.
- Resist any organic chemical Vapours or Fumes.
- Compatible masks: TW01SC, TW02S, TW08S, TW088.
- Weight: 22gm.



**96.0% Efficiency**

## MERCURY FILTER T/ME

CODE: 12360

### T/ME Filter

- Offers protection when working with mercury.
- Twist lock connection to STS masks is quick and easy to secure.
- It can resist up to 0.1 micron for liquid and 0.06 micron for Solid Particles.
- Water and Oil Repellency.
- Compatible masks: TW01SC, TW02S, TW08S, TW088.
- Weight: less than 95gm.



## AMMONIA GAS FILTER T/AM

CODE: 12343

### T/AM Filter

- Offers protection when working with ammonia gases.
- Twist lock connection to STS masks is quick and easy to secure..
- Compatible masks: TW01SC, TW02S, TW088.
- Weight: less than 120gm.



## ORGANIC GAS/VAPOUR FILTER CA-104II/OV

CODE: 01185

### CA-104II/OV Filter

- Offers protection when working with organic solvents.
- It can resist up to 0.1 micron for liquid and 0.06 micron for Solid Particles.
- Compatible masks: GM28S, GM76DS.
- Weight: 77gm.



## ORGANIC GAS/VAPOR FILTER CA-710/OV

CODE:

### CA-710/OV Filter

- Offers protection when working with organic solvents.
- Compatible masks: GM77/ME.
- Weight: light weight 90gm.



## PARTICLE FILTER X3

CODE: 11082

### X3 Filter

- Offers protection when working with dry and wet particles.
- Twist lock connection to STS masks is quick and easy to secure..
- It can resist up to 0.1 micron for liquid and 0.06 micron for Solid Particles.
- Repels Liquid or Solid particles both.
- Compatible masks: TW01SC, TW02S, TW08S, TW088.
- Weight: 22gm.



**99.9% Efficiency**

## PARTICLE /ORGANIC GAS FILTER XL3/OV

CODE: 1361

### XL3/OV Filter

- Offers protection when working with organic solvents.
- Twist lock connection to STS masks is quick and easy to secure..
- It can resist up to 0.1 micron for liquid and 0.06 micron for Solid Particles.
- It's can Activated Carbon Fiber repels any kind of fouling or unpleasant smell.
- Repels Liquid or Solid particles both.
- Resist any organic chemical Vapours or Fumes.
- Compatible masks: TW01SC, TW02S, TW08S, TW088.
- Weight: 65gm.



**99.99% Efficiency**

## PARTICLE FILTER T2

CODE: 11086

### T2 Filter

- Offers protection when working with dry and wet particles.
- Twist lock connection to STS masks is quick and easy to secure..
- It can resist up to 0.1 micron for liquid and 0.06 micron for Solid Particles.
- It's can Activated Carbon Fiber repels any kind of fouling or unpleasant smell.
- Water and Oil Repellency.
- It is Washable.
- Compatible masks: TW01SC, TW02S, TW08S, TW088.
- Weight: less than 30gm.



**96.0% Efficiency**

## ORGANIC GAS/VAPOUR FILTER T/OV

CODE: 1131

### T/OV Filter

- Offers protection when working with organic solvents.
- Twist lock connection to STS masks is quick and easy to secure..
- It can resist up to 0.1 micron for liquid and 0.06 micron for Solid Particles.
- Compatible masks: TW01SC, TW02S, TW08S, TW088.
- Weight: less than 80gm.



## HALOGEN/ACID GAS FILTER T/HG/AG

CODE: 12341

### T/HG/AG Filter

- Offers protection when working with Halogen and Acid gas.
- Twist lock connection to STS masks is quick and easy to secure..
- Compatible masks: TW01SC, TW02S, TW08S, TW088.
- Weight: less than 105gm.



**80.0% Efficiency**

## AMMONIA GAS FILTER T/AM

CODE: 12343

### T/AM Filter

- Offers protection when working with ammonia gas.
- Twist lock connection to STS masks is quick and easy to secure..
- Compatible masks: TW01SC, TW02S, TW08S, TW088.
- Weight: less than 120gm.





## DRY PARTICULATE FILTER R1

CODE: 11059

### R1 Filter

- Works on Dry Particulates .
- Compatible masks: DR10R, GM77R.
- Weight: 2gm.



**82.0% Efficiency**

## WET & DRY PARTICULATE FILTER R2

CODE: 11060

### R2 Filter

- Works on Wet and Dry Particulates.
- It's can Activated Carbon Fiber repels any kind of fouling or unpleasant smell.
- Compatible masks: DR10R, GM77R.
- Weight: 3.5gm.



**96.0% Efficiency**

## PRE-FILTER (Paintmate) L

CODE: 02601

### L Pre-Filter

- Attach Pre-Filter to Gas filter.
- Compatible Cartridge: CA-104/OV



## PRE-FILTER (Paintmate) LL

CODE: 02602

### LL Pre-Filter

- Attach Pre-Filter to Gas filter.
- Compatible Cartridge: X Series, T Series



## RETAINER C

CODE: 02782

### Retainer - C

- Attach Pre-Filter : LL
- Compatible Cartridge: X Series, T Series



## RETAINER CL

CODE: 02788

### Retainer - CL

- Attach Pre-Filter : L
- Compatible Cartridge: CA-104/OV



# KLEENGUARD\*

## Safety Coveralls

High Performance Protective Clothing Fabric



### A70 Chemical Spray Protection



#### Chemical spray protection



#### PERFORMANCE

##### Protection:

- Liquid-resistant, extra-long zipper delivers protection in primary exposure area
- Bound seams and taped storm flap for added protection
- Tested against more than 60 common industrial chemicals
- Respirator-fit hood designed for compatibility with complementary PPE

##### Comfort/Fit:

- Human-centric, Reflex® Design incorporates 12% more chest room and 6% longer body length than ANSI sizing standard, providing uninhibited movement and wearer comfort
- Wick-away lining provides enhanced comfort

#### TYPICAL USES

- Industrial cleaning and maintenance
- Hazardous waste remediation
- Environmental and biohazard cleanup
- Food Processing industry
- Handling of Aqueous chemicals.

### A40 liquid and particle Protection



#### PERFORMANCE

##### Protection:

- Passes ASTM F1670 testing for penetration of blood and bodily fluids\*

##### Comfort/Fit:

- Meets ANSI/ISEA 101-1996 sizing standards

#### TYPICAL USES

- Paint Spraying in Automotive & Aerospace
- Pharmaceutical industries
- Utilities
- Manufacturing
- Electronics
- Agriculture

		Color	M	L	Piece / Pack	Pack / Case
--	--	-------	---	---	--------------	-------------

A70 Coveralls

Zipper Front, Storm Flap,  
Elastic Wrists, Ankles & Hood



09812

09813

1

12

A40 Coveralls

Zipper Front, Storm Flap,  
Elastic Wrists, Ankles & Hood



99791

99792

1

25

# KLEENGUARD\* Eye Wear

Splash Goggles,  
Face Shield,  
V20 Purity and  
V30 Nemesis  
Safety Glasses



## PERFORMANCE

- Have impact-resistant polycarbonate lenses that meet European standard En166 1F
- Have a lightweight wrap-around design for added comfort and coverage
- Hard-coated lenses for scratch resistance
- 99.9% UVA/UVB Protection
- Anti-fog coating; ideal for humid environments and temperature variances

## TYPICAL USES

- Laboratory
- Pharmaceutical
- Chemical Handling
- Mining
- Oil Refineries
- Automotive
- Transport
- Manufacturing
- Food Processing

**KLEENGUARD™**

**V80 SG34 Splash Protection Goggle**



16362

## COMFORT

- Economical, soft, pliable frame for enhanced comfort
- Headband buckles are located toward the rear of the frame to limit interference with peripheral vision

## PROTECTION

- Button vents offer indirect ventilation while providing protection from splashes
- Fits over most prescription eyeglasses

**V90 Face Shield**



18629

**COMFORT**

- Monogoggle XTR goggles integrated with a face shield to provide full face protection from liquids and particulates without the hassle of primary eye protection underneath a face shield
- Fits over most prescription eyeglasses

**PRODUCTIVITY**

- Shield detaches from the goggles for a 2-in-1 solution
- Curved face shield conforms to the shape of the face for added protection

**V20 Purity™ Safety Glasses**



25654

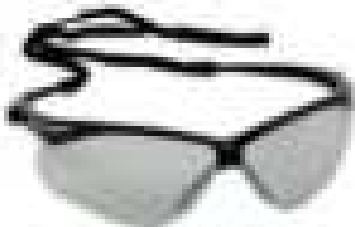
**COMFORT**

- Padded temples for enhanced comfort

**V30 Nemesis™ Safety Glasses**



*Stylish comfort. Lasting protection.*



20381

**COMFORT**

- Patented Flex-Dry™ nosepiece with integrated ridges to divert sweat
- Every pair includes a neck cord

Code	Lens	Coating	Frame	Units/Box
16362	○ Clear	Anti-Fog	● Green	50
18629	○ Clear	Anti-Fog	● Blue	6
25654	○ Clear	Anti-Fog	○ Clear	12
20381	● Indoor/Outdoor	—	● Black	12

# DISPOSABLE SURGICAL ITEMS



**3 PLY**  
Surgical Mask



**SURGICAL**  
Head Caps



**DISPOSABLE**  
Beared Cover



**DISPOSABLE**  
Shoe Covers

Protect to all sorts of splashes, dust & pollutants

# TIRED STANDING AT WORK?

**TIME**

**Duro Active**  
relaxed feeling

## Ergonomic Anti-Fatigue Mats

Duro Active has been ergonomically designed, to cater specifically to the segment of workforce that spends long hours at work in standing posture. Its anti fatigue property coupled with the cushion effect makes Duro Active an ideal foot rest for the user. The ergonomic design enhances blood flow to the legs, thereby reducing pain. Duro Active is a recommended product across industries like retail, hospitality, printing & packaging, healthcare, Beauty & Salon etc.

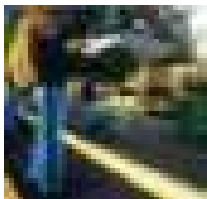
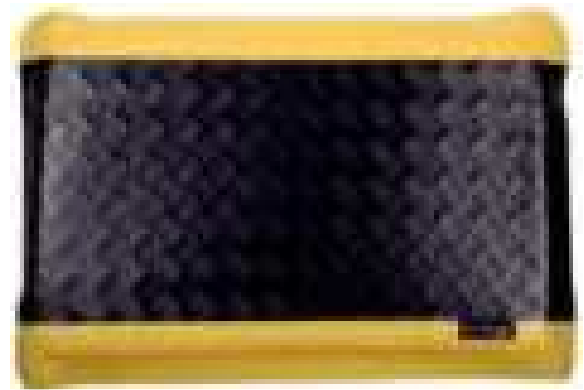
### Advantage:

- Duro Active have sloped edges (Sloped Edges are less of trip hazard & allow carts to roll over)
- Hard, unyielding floor like concrete, are the least comfortable surface to work on
- Duro Active reduce risk of accidents and improve safety
- Decrease foot and lower limb fatigue for people who stand in one position for long periods
- Diamond Tread Pattern on top surface

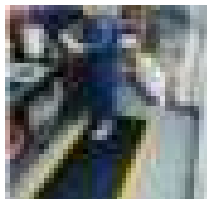


### Features:

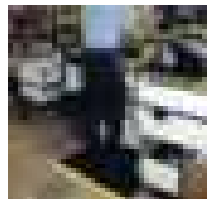
- Anti fatigue
- Increased work pleasure
- Ideal foot rest in Standing Posture
- Cushion Feel



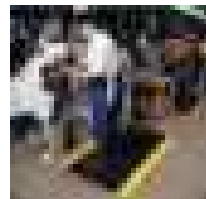
Automotive  
Assembly  
lines



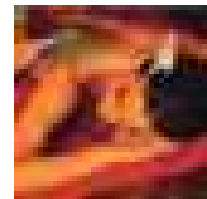
Laboratories,  
Hotels, Hospital,  
Pharmaceutical /Medical



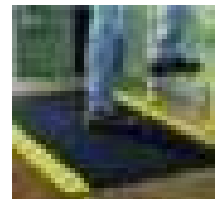
Excellent for  
Retail Counters



Engineering  
Work Shop



Spas,  
Beauty Parlours



Assembly Shop  
Floor

Thickness	: 22 MM (±3%)	Cleaning	: Sweep ,vacuum or damp mop
Material Thickness	: Top Layer 2mm & Bottom layer 1mm.	Edges	: Ant Trip, Solid Molded, Tapered edge
Available Sizes	: 2ft X 3ft, 2ft X 4ft , 2ft X 5ft, 3ft X 5ft, 3ft X 6ft (±3%)	Cutting	: Not Recommended
Structure	: PVC sheet with foam sandwich	Temperature use range	: 0- 60° C
Material	: PVC + foam	Application	: Can be used on both Wet and Dry Flooring
Colour	: Black with Yellow edges / Grey with Red edges / Blue with orange edges	Warranty	: One Year



# DEEPAK FERTILISERS AND PETROCHEMICALS CORPORATION LIMITED

India's largest manufacturer of Isopropyl Alcohol.

**Cororid**

Hand Sanitizers, Disinfectants & Wipes

*The gold standard of protection*



**Cororid brings you a range of IPA-based solutions – including 99.9% Pure IPA , Hand Sanitizers, Ready-To-Use Disinfectants** (for high-touch surfaces), **Broad Spectrum Disinfectants 256** (for floor mopping and fumigation in critical, high-traffic areas like hospitals, restaurants, malls, labs, airports, schools, colleges, etc.) & **IPA-based Wipes**.

**complete protection, complete peace of mind.**



**INDIAN  
NATION TRADERS**

HUB FOR INDUSTRIAL SAFETY AND HYGIENE PRODUCTS

# 99% ISOPROPYL ALCOHOL (IPA) 2-PROPANOL

## LR GRADE

### IPA - Isopropyl Alcohol

IPA – Isopropyl Alcohol is a highly effective, general use cleaning solvent that is used to clean a variety of substrates and remove a variety of soils. This 99.8% isopropyl alcohol is available in a variety of sizes for all types of use. Technical grade isopropyl alcohol.

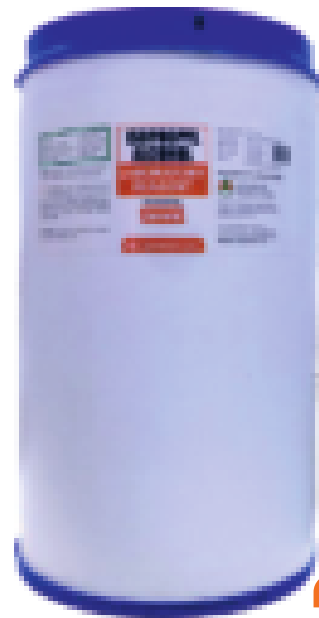
Physical State	Liquid
Appearance & Odour	Colourless liquid with alcoholic odour
Vapor Pressure	44 mmHg @ 25 oC
Specific Gravity	0.79 @ 20 oC
Water Solubility	Miscible in water
Boiling Point	82 oC
Freezing Point	(-)88.4 oC
Vapor Density	2.1
Molar Mass	60.10 g / mol
Density	786kg / cm3



500 ML.

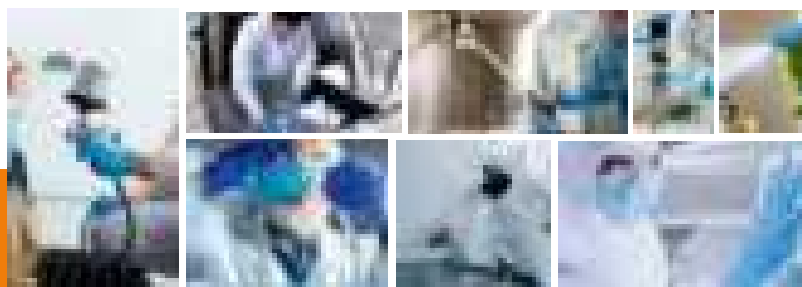


5 Ltr



25 Ltr

Description	Qty Per Pack	Qty Per Case
Isopropyl Alcohol 99%	500 ml	24 Bottles
Isopropyl Alcohol 99%	5 Ltr	2 Can
Isopropyl Alcohol 99%	25 Ltr	1 Drum





# Hand Sanitizer Isopropyle Alcohol Based

Cororid Hand Sanitizer, fortified with Isopropyl Alcohol (IPA), an alcohol variant that is recommended by the World Health Organization (WHO) and is most preferred internationally for use in sanitizers and disinfectants. Cororid offers advanced protection against a host of bacteria, fungi, and viruses including HCV, COVID-19, etc.

## IPA + Hydrogen Peroxide + Glycerol (Emollient)

Effective formula for hand protection



## Brilliant Blue Hand Sanitizer

- Formulated with WHO-recommended IPA.
- Excellent anti-bacterial, anti-fungal and anti-viral protection.
- Protects against Coronavirus.
- Waterless and quick action.
- Prevent dryness of skin.
- Excellent skin tolerability even with long-term use.

Description	Qty Per Pack	Qty Per Case
Hand Sanitizer ( Flip Top )	50 ml	150 Bottles
Hand Sanitizer ( Push Pump )	100 ml	100 Bottles
Hand Sanitizer	200 ml	—
Hand Sanitizer ( Pump Bottle )	500 ml	20 Bottles
Hand Sanitizer	5 ltr	4 Can

## Colorless / Odourless Hand Sanitizer

- Formulated with WHO-recommended IPA.
- Recommendation in Food & Pharma.

Description	Qty Per Pack	Qty Per Case
Hand Sanitizer ( Clear Color )	5 ltr	2 Can



# Broad Spectrum Disinfectant 256



## Salient Features:

- ✓ Effective against Gram +ve & Gram -ve bacteria, mycobacterium, and most viruses.
- ✓ Higher activity at warm temperature.
- ✓ Active in presence of organic matter.
- ✓ Quick acting disinfectant.
- ✓ Non-corrosive.
- ✓ Removes general stains such as dirt, grease and oily substances.
- ✓ Active at wide ranges of pH Full activity in presence of hard water.

Description	Qty Per Pack	Qty Per Case
Environment Disinfectant	5 Ltr	4 Can
Environment Disinfectant	1 Ltr	6 Bottles
Environment Disinfectant	500 ml	12 Bottles

# IPA Based Surface Disinfectant (70% IPA)

## Salient Features:

- ✓ Isopropyl alcohol is a very effective agent against microbial, fungi, and viruses.
- ✓ Economical disinfectant solution for frequent touchpoints.
- ✓ Recommended by MoHFW.



Description	Qty Per Pack	Qty Per Case
Cororid Surface Disinfectant (Trigger Pump)	500 ml	12 Bottles
Cororid Surface Disinfectant	5 Ltr	4 Can

**Safer surfaces are grounds for healthier workspaces!**

# IPA Based Wipes

Wipe away the very possibility of infections.



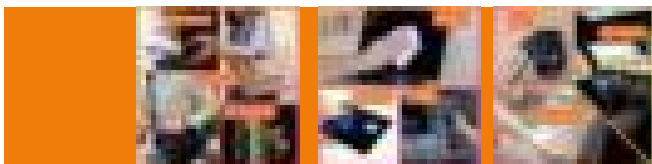
Cororid IPA based Wipes are fortified with 70% Isopropyl Alcohol (IPA), the globally preferred alcohol for sanitizers, which ensures 99.9% protection against microbial bacteria, viruses and fungi. It also kills Coronavirus agents in 30 seconds as per DHS- S&T. Made from Virgin IPA, Cororid IPA based Wipes ensure superior quality.

**Wipe out infection with  
99.9% germ protection!**



- ✓ Fortified with 75% Isopropyl Alcohol (IPA), the globally preferred alcohol for wipes.
- ✓ Made from Virgin IPA, ensuring superior quality.
- ✓ 98.8% pure alcohol is used to make IPA wipes.
- ✓ Protects against infections from infected surfaces.
- ✓ Effective against Covid-19.
- ✓ Effective against microbial bacteria, fungi and viruses.

Description	Qty Per Pack	Qty Per Case
IPA Wipes	10 Wipes	144 Pack
IPA Wipes	30 Wipes	108 Pack





WORKPLACE HYGIENE,  
INDUSTRIAL WIPES  
& SAFETY PRODUCTS



**Kimberly-Clark** *Scenex* *Scott* **KIMTECH** **WYPALL** **IG KLEENGUARD**



PERSONAL PROTECTIVE  
EQUIPMENTS



HAND SANITIZERS, IPA,  
DISINFECTANTS & WIPES



IPA

Hand Sanitizers

Disinfectants

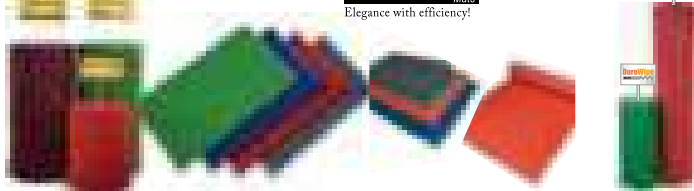
**DuroMats**  
World Largest Selling Mats

**DuroTurf**  
DOOR MATS

**DuroSoft**  
MATS  
Elegance with efficiency!

**DuroWipe**  
MATS

**Duro Active**



ANTI FATIGUE MAT



**INDIAN  
NATION TRADERS**

HUB FOR INDUSTRIAL SAFETY AND HYGIENE PRODUCTS

We Deal in :-



indiannationaltrading@gmail.com



9574179995  
8989419755



GeM  
Government  
e Marketplace



MSME  
MICRO, SMALL & MEDIUM ENTERPRISES  
सूक्ष्म, लघु एवं मझम उद्यम  
UDYAM-GJ-06-0011818

**C-23, Amardeep Complex, Sarangpur, Ankleshwar, Gujarat - 393002**